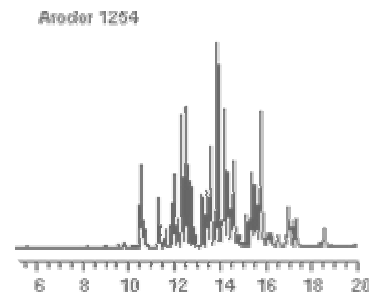


Our focus for chemical analyses is to provide your project timely, accurate and cost effective chemical analyses and information that is focused on your specific project. We do this by focusing on the specific project requirements and designing an analytical approach and technical program that achieves the goals of the program.

Mobile Laboratory Analysis

We have spent the past ten years taking laboratory instruments to the project site, using standard laboratory methods that allow us to generate data more quickly and at less cost. Our goal is to analyze and provide real time analysis and interpretation within 1/2 hour of collection.

Our analytical technologies can generate chemical analyses for most organic and inorganic target compounds. We have developed and use methodologies for unique and/or difficult compounds, e.g. EDB, explosives, etc. If it is important to understand who might be responsible for a particular compound or group of compounds, we'll find a way to identify and or separate the compounds to assist you in determining potential ownership.



Our Mobile Laboratories and Rapid Turn Around services can support your project with experienced and skilled scientists and chemists coupled with state of the art analytical equipment and techniques.

Our mobile chemical analysis is acceptable as final or site closure data and has been used by many state and federal regulatory agencies including:

- USEPA - RCRA, CERCLA, Superfund programs,
- State agencies,
- AFCEE, Air Force Center for Environmental Excellence,
- USACOE, US Army Corps of Engineers

Rapid Turn Around Services

We also perform chemical analyses off site in our facility in Scarborough, Maine. Our **Rapid Turn Around** analysis provides consistent quality data within **48** hours. If expedited analysis is required, we can also be ready to generate analysis within 24 hours, if requested. We provide focused analysis based on your project requirements and will support the data with assistance in interpretation.



ESN North Atlantic

15 Holly St., Suite 102
PO Box 6752
Scarborough, ME 04070

Phone: 207-883-0860
Toll Free: 800-880-0533
Fax: 207-883-1912
Email: info@esnnorth.com
Website: www.esnnorth.com